

BOCCHI

BELSENA 2.0

PULL-DOWN KITCHEN FAUCET



Product Code

2023 0001 XX

FEATURES:

- 35 mm ceramic disc valve cartridge
- Cartridge working life: >500,000 times
- Lead-Free faucet body, contains $\leq 0.25\%$ total lead content by weighted volume
- Maximum flow rate = 1.8 gpm (6.8 l/min) at 72 psi / Features added Boost feature that will up the sprayer to 2.2 gpm when engaged
- Spout swivels 360°
- Standard or Needle Spray with weighted shower hose
- 90° forward handle
- Includes flexible inlet hoses, each 24"
- Stabilizer flange included
- Extended 3.5 in shank

WEIGHT: 4.0 lbs

AVAILABLE FINISHES:

- CH - Chrome
- SS - Stainless Steel
- MB - Matte Black
- BG - Brushed Gold

DIMENSIONS:

Spout length = 8.58 in (218.7 mm)

Spout height = 8 in (203.5 mm)

Overall Faucet height = 15.7 in (399 mm)

OPTIONAL ACCESSORIES:

2180 0003 - Contemporary Deck Plate

2180 0004 - Traditional Deck Plate

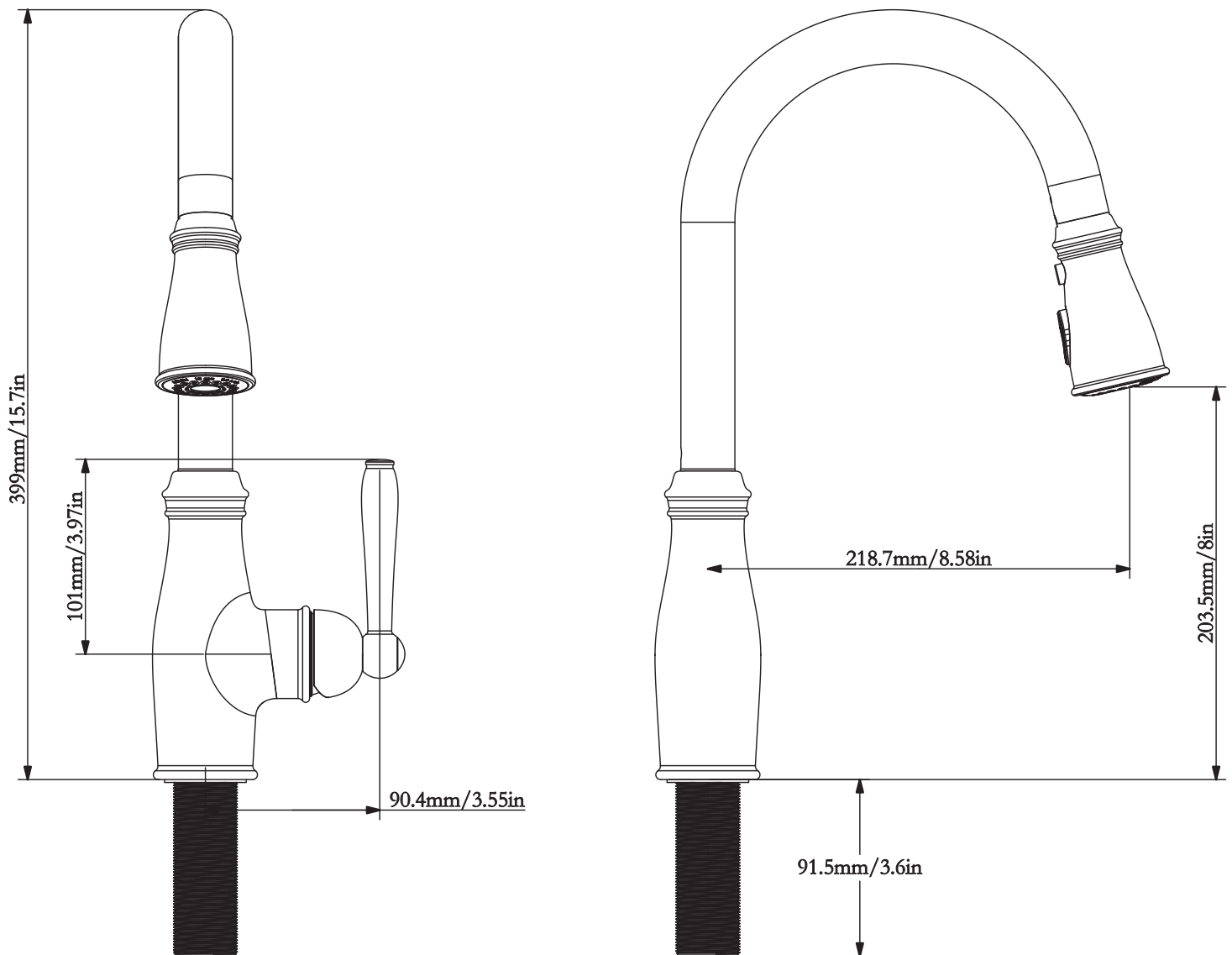
2340 0005 - Lesina Soap Dispenser

2340 0006 - Tronto 2.0 Soap Dispenser

CODES / STANDARDS:

ASME A112.18.1 / CSA B125.1 / NSF 61 / NSF 372 / AB1954 / DOE - Energy Policy Act 1992 / CEC - California Energy Consumption / Meets CalGreen requirements for kitchen faucets

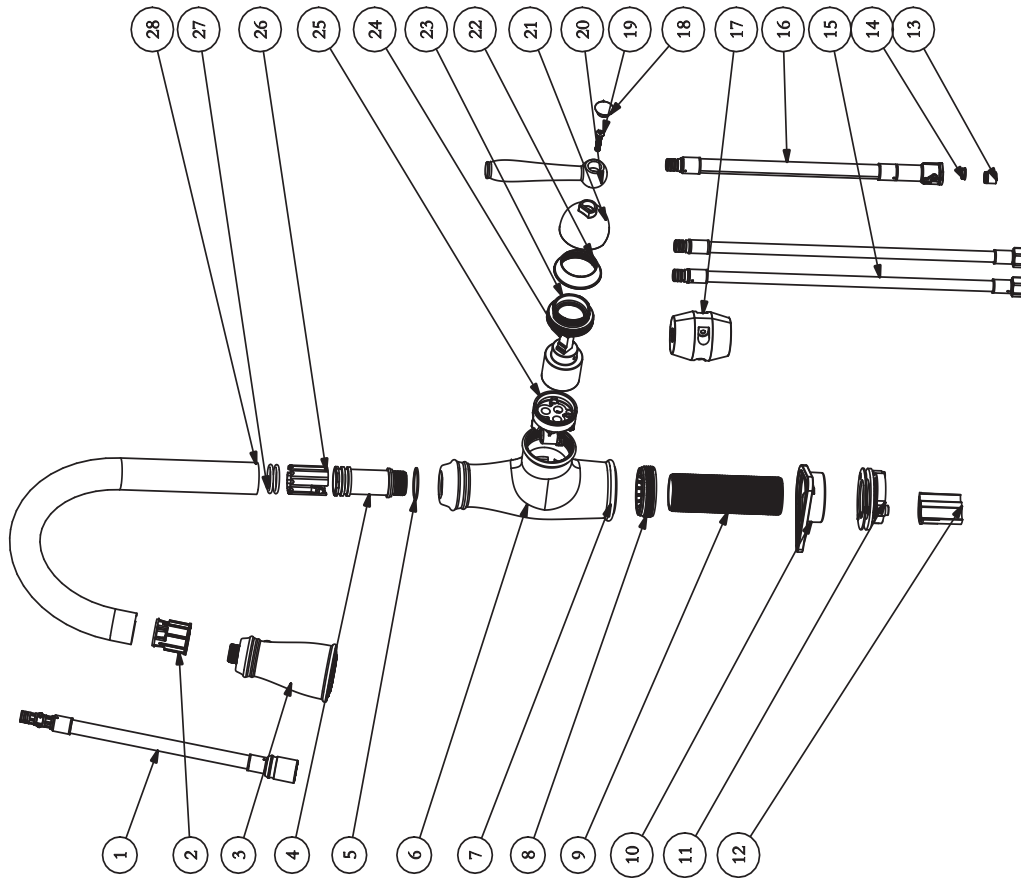
BOCCHI



IMPORTANT: These measurements are subject to change or cancellation. No responsibility is assumed for use of superseded or voided pages. BOCCHI reserves the right to make revisions without notice to product specifications.

BOCCHI

28	121010471062	Spout	SUS304	1
27	R20_3X2_62X02	3521 ORING	EPDM	2
26	121010471040	Gasket	POM	1
25	121010521011	Cartridge Seat	PPA+50%GF	1
24	F35X27_6X01	Cartridge Assembly	POM	1
23	999910101326	Nut	HPb57-3	1
22	121010211002	Decorative Cover	ABS757	1
21	121010511058	Handle	Zinc Alloy	1
20	121010511059	Handle	Zinc Alloy	1
19	C4X20_3X02M	Screw	SUS304	1
18	121010221001	Handle	ABS727	1
17	999910101762	weight	Iron	1
16	999910061139	Outlet Hose Assembly	TPE+PVC	1
15	999910060483	Inlet Hose Assembly	SUS304+PVC	2
14	121010481019	Flow Regulator	POM	1
13	N10X10_5X03	Check valve group	PP	1
12	121010481009	Gasket	POM/M90	1
11	121010221021	Accessories bag	Aluminium Alloy	1
10	113110411013	Stabilizer gasket	POM_CF2001	1
9	121010481008	Mounting threaded pipe	Aluminium Alloy	1
8	121010211001	Nut	PA66+30%GF	1
7	121010281001	Washer	EVA	1
6	121010511057	Body	Zinc Alloy	1
5	121110131011	Washer	POM	1
4	121010211015	Spindle	Aluminium Alloy	1
3	121110570058	Sprayer	ABS	1
2	121010471058	Gasket	POM	1
1	999910060801	Pull-down Hose Assembly	TPE+PA	1
NO.	DWG.NO.	NAME	MATERIAL	QTY



IMPORTANT: These measurements are subject to change or cancellation. No responsibility is assumed for use of superseded or voided pages. BOCCHI reserves the right to make revisions without notice to product specifications.